

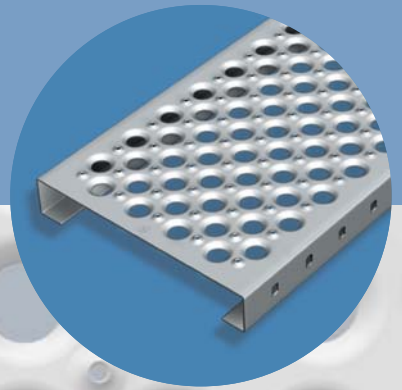
safe walking

# INFO

## Graepel-STUV

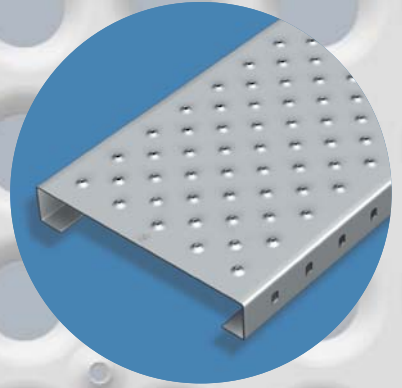
### **Graepel-Round F**

This grating is suitable for a range of purposes including internal or external walkways and stairs in industrial areas.



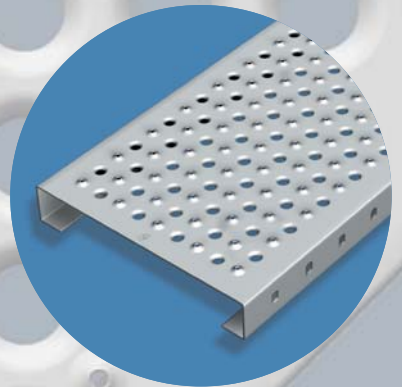
### **Graepel-Round A**

The small perforations are ideal for preventing small objects from falling through. Ideal for walkways and stairs in either public or industrial areas.



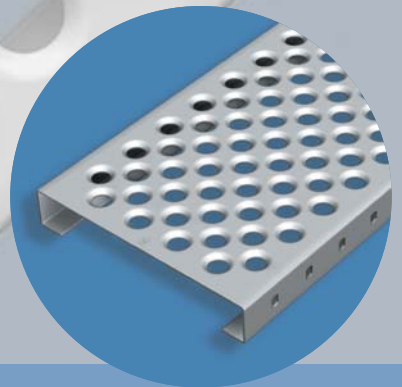
### **Graepel-Round B**

These perforations are safe and comfortable underfoot making the grating ideal for internal and external pedestrian walkways and stairs in public area



### **Graepel-Round C**

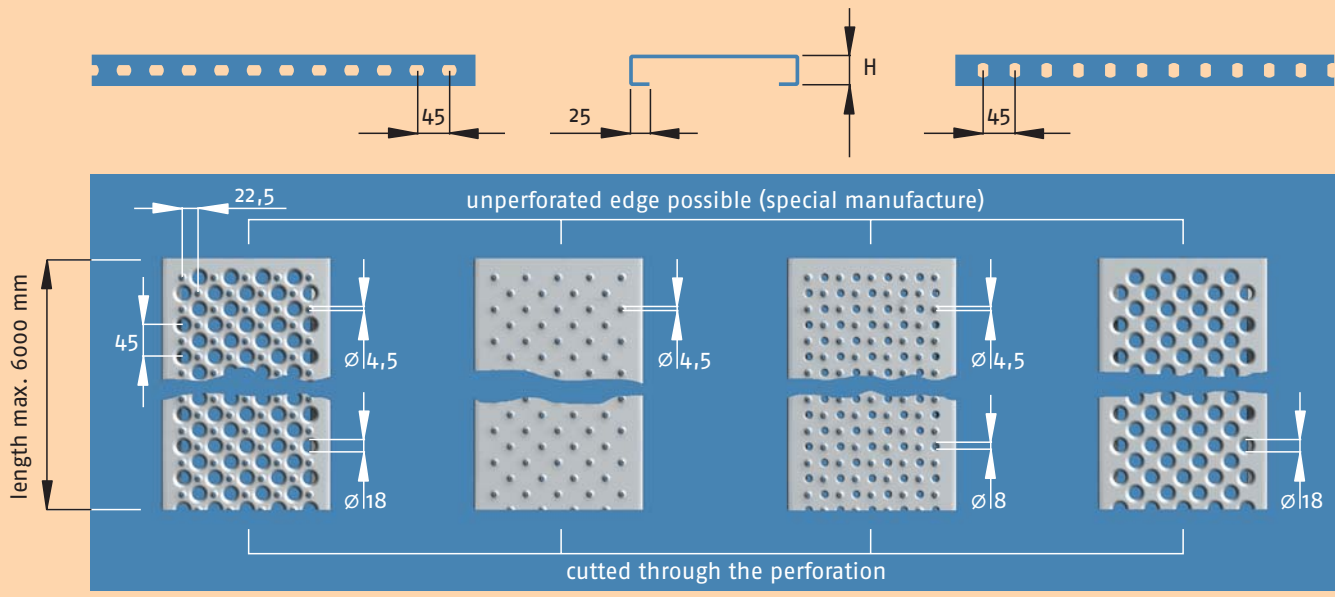
This grating has an aesthetically pleasing round perforations and is ideal for internal walkways



**Graepel**

Design  
Safety  
Performance





Anti-slip rating Anti-slip / displacement	Graepel-Round F	Graepel-Round A	Graepel-Round B	Graepel-Round C
	material	DD 11 hot-dip galvanised R 11 / V 10 Stainless steel R 12 / V 10 Aluminium R 11 / V 10	DD 11 hot-dip galvanised R 11 / V 10 Stainless steel R 13 / V 10 Aluminium R 12 / V 10	DD 11 hot-dip galvanised R 11 / V 10 Stainless steel R 13 / V 10 Aluminium R 12 / V 10

**Graepel-gratings: Round F / A / B / C**

material / Sheet thickness	dimensions	lengths	to 6000 mm
		DD 11 mild steel 2,0 / 2,5 mm	length divider
DD 11 hot-dip galvanised / DX 51 D pre-galvanised 2,0 / 2,5 mm	widths	182 / 240 / 298 / 330 / 356 mm	
stainless steel 2,0 mm	width divider	22,5 mm	
Aluminium 2,0 / 2,5 / 3,0 mm	heights	30 / 50 / 75 mm	
		other dimensions possible	

**Graepel-STUV GmbH**  
 Waldemar-Estel-Straße 7 · D-39615 Seehausen/Altmark  
 Fon +49(0) 3 93 86/27-0 · Fax +49(0) 3 93 86/27-180  
 www.graepel.de · info@graepel-stuv.de

**Friedrich Graepel AG**  
 Zeisig Weg 2 · D-49624 Lönningen  
 Postfach 11 51 · D-49618 Lönningen  
 Fon +49(0) 54 32/85-0 · Fax +49(0) 54 32/20 54  
 www.graepel.de · graepelag@graepel.de

