

Flooring Sheets



Underfoot Safety

Unfortified roads and terrain can be covered temporary or permanent with pierced plates, you can use over and over again and can be driven by heavy vehicles. A fast solution. Directly from the manufacturer. 100 % made in Germany.



Flooring sheets for more bearing strength

Soaked or sandy grounds increase the hard rate of each off road fan. But sometimes the challenge is, to increase the bearing strength and make the area drivable.

For example grassland used as parking areas, or lose soil on construction sites, which still has to be accessible for heavy construction machinery.

Facing these challenges, Graepel paving plates are a safe way to anchor the floor temporary or for long term.

Contact:

Graepel North America Inc.

13220 Lynam Drive
Omaha, NE 68138, USA
Your contact person: Mark Zumdohne

Fon: +1 402-861-1817
Fax: +1 402-894-4952
sales@graepel-na.com
www.graepel-na.com

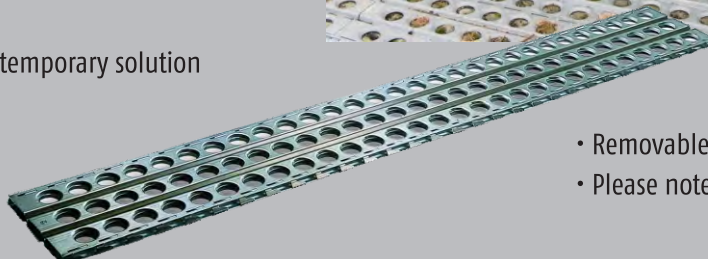
Certified according to DIN EN ISO 9001 and 14001

As of: 12 | 2017

Flooring sheets for runways, parking lots and loading platforms

Fields of application:

- Construction sites, parking lots, plant nurseries, sport airfields
- Open-air events and other events
- Accessory for safaris, off road, trekking, military
- Durable or temporary solution



- Removable and reusable
- Please note: ground must be load-bearing!

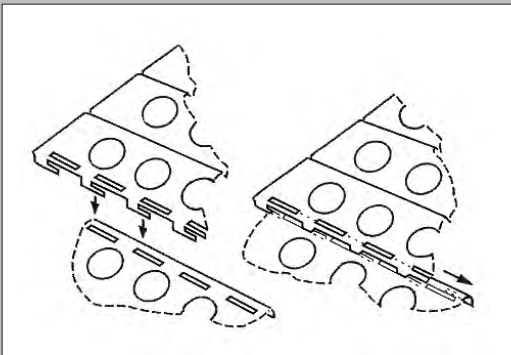
Here you can find the order numbers.

Material	Length	
	3,014 mm	1,520 mm
DD 11 hot-dip galvan.	60 2400 0002 002	60 2400 0003 002
ENAW 5754	60 2400 0002 003	60 2400 0003 003



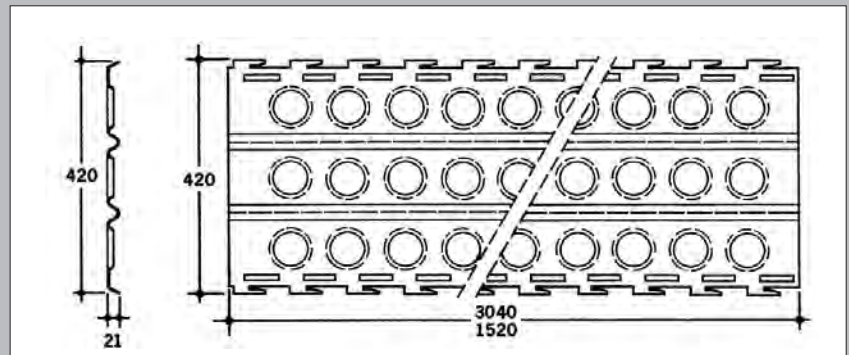
Graepel flooring sheets can be laid quickly and removed again just as easily.

Graepel flooring sheets: technical data



Dimensions

- Length: 1,520 mm or 3,040 mm
- Material thickness: 3 mm
- Width: 420 mm



Special design

If you want, we are able to supply the paving plates in aluminum (ENAW 5754) 4 mm thick and without the hooks.

Do you have any questions?



(Company stamp)

Please fax back to:

Fax: +1 402-894-4952

Please contact us.

Please send us more information.