



Expertise and Quality in Metal

Graepel – a successful
enterprise for
125 years

Graepel–Group presents itself
Short presentation



Locations



**Graepel Löningen
GmbH & Co. KG**

- founded in 1889
- 320 staff members
- 71,000 m² plant area
- 28,000 m² inside area
- 44.4 M € sales in 2015
- 1.5 M € investments



**Graepel Seehausen
GmbH & Co. KG**

- founded in 1949
- 250 staff members
- 154,000 m² plant area
- 29,200 m² inside area
- 28 M € sales in 2015
- 1.2 M € investments



**Oberflächentechnik
Löningen GmbH & Co. KG**

- founded in 2013
- 20 staff members
- 10,000 m² plant area
- 5,000 m² inside area
- 2.4 M € sales in 2015
- 0.2 M € investments



**Graepel North America
Inc., Omaha, NE, USA**

- founded in 2006
- 23 staff members
- 29,500 m² plant area
- 4,200 m² inside area
- 9.5 M US\$ sales in 2015
- 0.3 M US\$ investments

Your advantages at a glance



Everything from one source

“Graepel” stands for competence in perforated sheet metal forming and underfoot safety in Europe and worldwide. Now with in-house painting capabilities.



Graepel workflow

Together with our customers, we develop tailor-made solutions for individual requirements: from idea to delivery.



Quality assurance

Graepel has its own toolmaking facility and is able to manufacture prototypes. Optimum quality management is our standard.



Supply chain

Graepel supplies its products to 30 countries worldwide “just in time.” Special departments provide optimal logistic processes.

For system components

We use the very latest technology such as ProE and Inventor in order to achieve the greatest perfection in quality and functionality for system components for commercial vehicles.

The seamless development chain continues by building our own prototypes and the manufacture of our own tools. To ensure absolute precision from the beginning, we apply our 125 years of experience in perforated sheet metal processing.



**Ventilation grilles |
Insect protection |
Stone guard**



**Thermal-insulation
plates**



Tread plates



**Treads, Steps and
Ladders**

For rail vehicles

Railway vehicles are in tough continuous use for a long time. That is why their treads and ventilation grilles have to meet highest demands regarding life and load capacity.

Treads, steps and ventilation grilles by Graepel are extremely suitable for assembly onto railway vehicles because of their high quality standards. Selection of material and processing meet high demands.



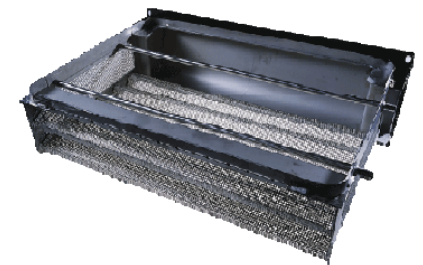
Steps



**Tracks for low-floor
trains**



Tread



Assemblies

For agricultural machinery

Whether it is a matter of developing individual parts or supplying entire assemblies, due to our use of the very latest machinery and processes, extending from CAD-based development to CNC perfection in manu-

facturing, we offer you a range of services that always satisfies the specific demands of agriculture - all under one roof.



**Ventilations grilles |
Insect protection |
Stone guard**



**Screening | Drying |
Separating**



Treads | Ladder rungs



Assemblies

For construction machinery and vehicle construction

Graepel catwalks, treads, ladders and platforms are slip-resistant and functional also under especially tough outdoor conditions. The hot-dip galvanized surfaces, which we manufacture in our in-house galvanizing shop, offer an above-average durability. Naturally, we also offer painted, powder-coated and

anodized surface finishes. We develop and manufacture individual components or premounted and ready-to-install assemblies of highest quality for all kinds of construction machinery and vehicles ensuring safe standing, ascent and entry.



Ventilation grilles



Treads | Ladder rungs



**Service platforms |
Platforms**



Catwalk | Ladders

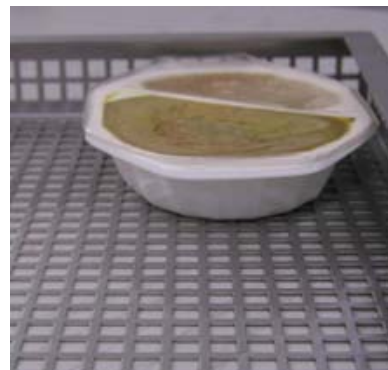
For machine and plant manufacture

Custom designs with Graepel gratings and perforated sheetings provide for safe accessibility and an utmost level of slip resistance in all weathers. Thanks to high-quality materials and an excellent level of rigidity, large span widths are possible without complicated

frame structures. The robust surfaces guarantee a long life, also under extreme weather conditions and when aggressive substances are present; thus providing underfoot safety.



Runways for industrial plants



Shelves for autoclaves



Service platforms for cableways



Perforated sheets for drying

For steel construction

Graepel gratings offer highest load capacities at a low dead weight. This gives them significant advantages over open mesh flooring in steel construction, because less substructure is required due to the load capacity in longitudinal direction.

Architects are increasingly discovering the aesthetic charms of the perforations and their graphical structures. They use Graepel gratings as ceiling lining and facade cladding because of their metallic surface, permeability to air and light as well as their durability.



Facade cladding



Steps and platforms



Spiral stairways



Ladder rungs

For renewable energies and Offshore

In order to provide underfoot safety in installations for the production of renewable energy and in offshore installations, Graepel gratings can be used as stairways, catwalks and platforms.

Special perforations provide for slip resistance and drainage effect so that the plant is safely accessible even in cases of heavy contamination.



Biogas plants



**Offshore
wind power plants**

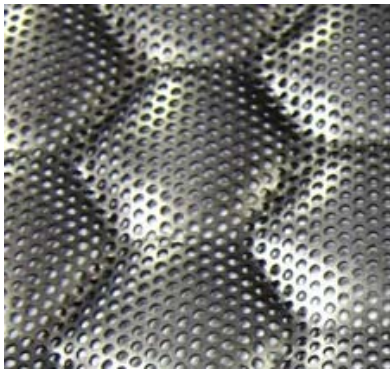


Landing docks



Fish farms

At your service, worldwide



**Graepel Lönigen
GmbH & Co. KG**

Zeisigweg 2
49624 Lönigen
Deutschland

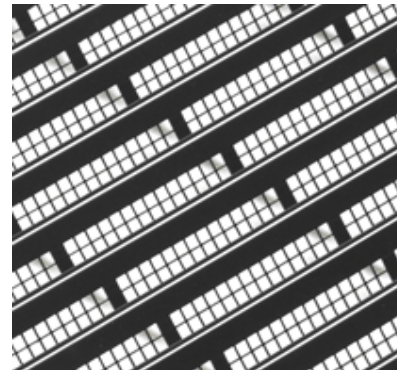
phone: +49 5432 85-0
gl.info@graepel.de



**Graepel Seehausen
GmbH & Co. KG**

Waldemar-Estel-Str. 7
39615 Seehausen (Altm.)
Deutschland

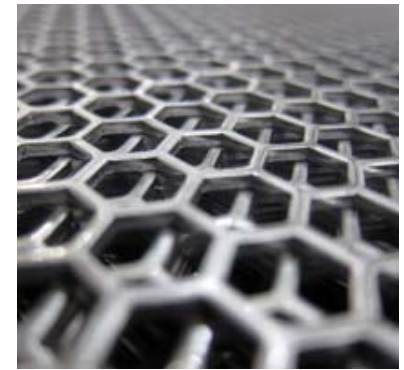
phone: +49 39386 27-0
gs.info@graepel.de



**Oberflächentechnik
Lönigen GmbH & Co. KG**

Hinrich-Weyhausen-Str. 24
49624 Lönigen
Deutschland

phone: +49 5432 85-461
otl.info@graepel.de



**Graepel North
America Inc.**

13220 Lynam Drive
Omaha, NE 68138
USA

phone : +1 402 861-1817
office@graepel-na.com

Many years of successful cooperation with:



CLAAS



DAF

DAIMLER



DDoppelmayr®

EvoBus



JOHN DEERE

LEITNER
ropeways

LIEBHERR



SENEBOGEN

SIEMENS



A close-up photograph of several sheets of perforated metal, likely aluminum or stainless steel, arranged in a grid. The sheets are slightly offset from each other, creating a sense of depth. The surface is highly reflective, with many bright highlights and shadows. A semi-transparent blue rectangular box is overlaid on the left side of the image, containing white text.

Thank you for
your attention.

For more information please visit
www.graepel.de/en

